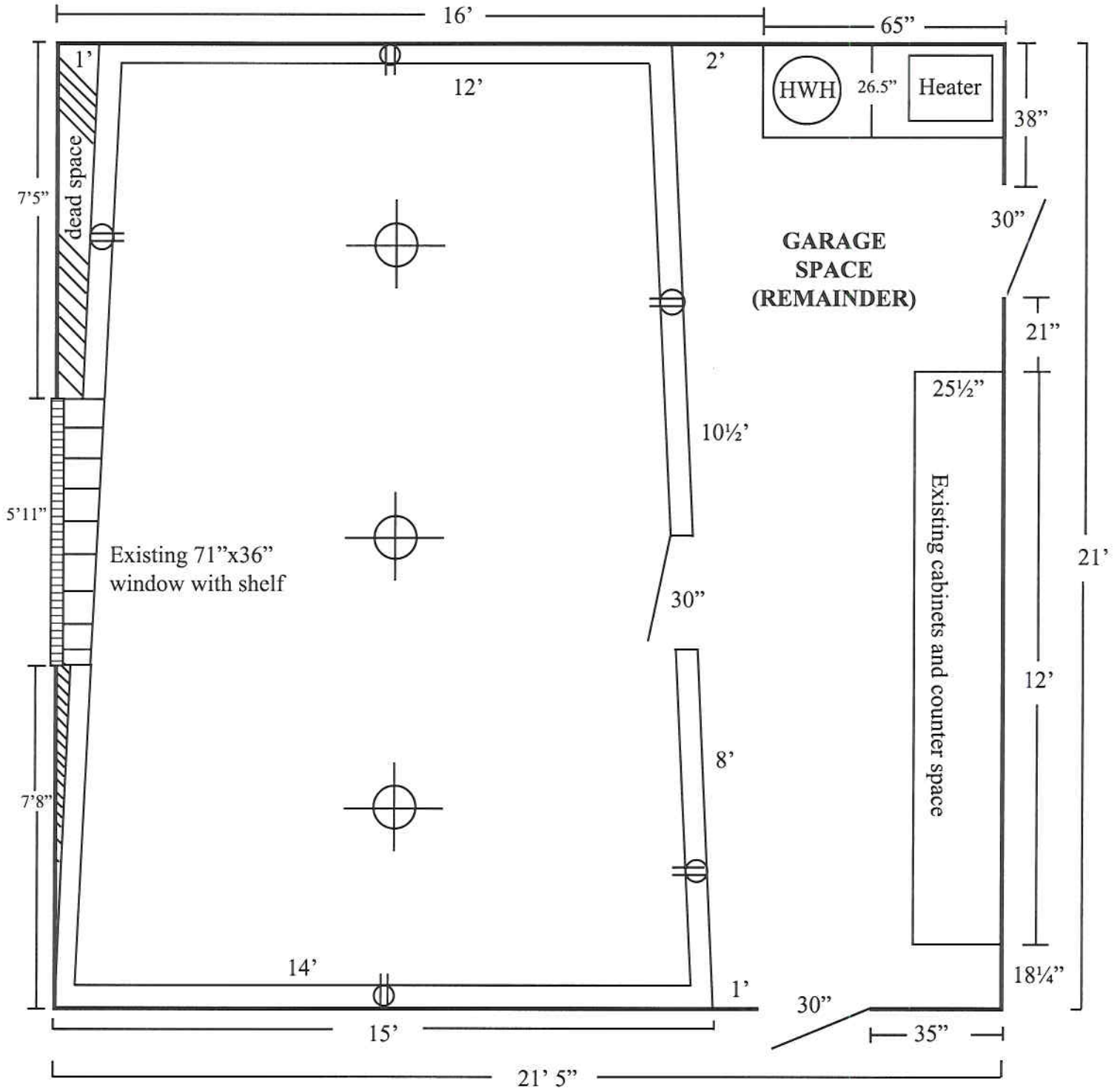


# REMODEL OF EXISTING GARAGE INTO A SOUND ROOM / HOME THEATER



SCALE: 5/16" = 1'-0"

## NOTES

1. 2x6 construction, 16" OC, bolted w/epoxy to cement floor
2. Ceiling height of sound room 9'
3. Typical track lighting overhead
4. No plumbing or closet/storage space